

Wightwash

Volume 2, Number 57



Newsletter of the Isle of Wight branch of CAMRA

Autumn Issue 2013

The Campaign for Real Ale exists to preserve and promote good beer and pubs.

In this Free Issue:-

Pub News *Pete's Progress* **POLICE PAGE**

Beergium **HASH HOUSE HARRIERS**

*Break*ing the Seal **PRIZE QUIZ**

Island Landmarks and much, much more...



A new type of pub for Cowes (see page 7)

www.
GoddardsBrewery.com

www.yates-brewery.co.uk

www.islandbrewery.co.uk

What Pub

Currently, CAMRA is preparing a national website called "What Pub" giving details of every pub in the country. All local branches have been asked to survey the pubs in their area and the Isle of Wight branch under the stern directions of Ken "Buzzy" Matthews was one of the first to submit their results. In the next issue of Wightwash, Buzzy gives us his overall observations of the survey. In the meantime here are a few statistics:-

- Number of pubs = 155 plus 10 seasonal
- Number of pubs **not** selling real ale = 12
- Number of pubs selling local beer = 84
- Number of handpumps = 448

The details from this survey are being transferred to the "find-a-pub" page on our website - www.wightwash.org.uk

Latest

"What Pub" is due to go "live" later this month. In the meantime members can log on with their membership details and non-members can sample a "taster".

www.whatpub.com

Cider

Now that Wightwash has a Cider Rep in the form of Gemma Vine, we are hoping to run a cider version of BeerPoint, not surprisingly called "CiderPoint". If you know of a pub that promotes real cider, please contact her via editor@wightwash.org.uk

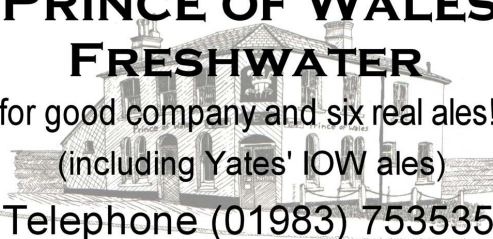
A preliminary list shows the following pubs:-

- White Lion, Arreton
- Old Village Inn, Bembridge
- Cowes Ale House
- Duke of York, Cowes
- Griffin, Godshill
- Taverners, Godshill

Chris and Wendy welcome you to...

**THE
PRINCE OF WALES
FRESHWATER**
for good company and six real ales!
(including Yates' IOW ales)

Telephone (01983) 753535



- Castle, Newport
- Newport Ale House
- William Coppin, Newport
- Fowler & Co., Ryde
- King Harry's Bar, Shanklin



Join
CAMRA
Today



Just fill in the form below and send , with a cheque (payable to CAMRA Ltd) to Membership Secretary, CAMRA, 230 Hatfield Road, St. Albans, Herts, AL1 4 LW
Rates are Single £25 Joint £30
Over 60 and Under 26 £17.50 (Joint £20.15)

Name.....

Address.....

.....
.....

Post code.....

I wish to join the Campaign for Real Ale, and I agree to abide by the Memorandum and Articles of Association.

Signed.....Date.....

Take advantage of the CAMRA **direct debit option** with 15 months subscription for the price of 12.
www.camra.org.uk/joinus or call 01727 867201

The Village Inn

Shanklin Old Village

Open lunchtimes and evenings
for lunches, snacks, evening meals and REAL ALE
Good Food, Fine Wine and Fine Ale. Tel: 862514

**Check
out
Specials Board**

**Live
Entertainment
Every Night**

One establishment that certainly should feature is the Apple Farm at Afton, Freshwater. Paul Heathcote has sent us the tasting notes for their latest 15 arrivals, all available to try at their cafe/bar or to take away. For more details visit www.aftonpark.co.uk or phone 755774

Goddards

The brewery is currently in production of 144 casks of "Bestivale" ready for the Bestival weekend.

The fine weather this summer, particularly in the run up to the Bank Holiday weekend, certainly boosted trade and sales were better than last August.

The itinerary for the seasons will follow last year's pattern with **Ducks Folly** available from October, **Pie Eyed** (with a redesigned pump clip - thank heavens!) will be ready for Christmas and **Winter Warmer** will be available throughout the winter *Brian Jacobs BLO.*

Island Brewery

The volume is up and Island Brewery is going at it in full swing like a well-oiled machine, rattling beers out for the season in cask and bottle for both on the Island and off the Island, with a

new supply deal with Shepherd Neame, Britain's oldest brewery, from the Island's newest.

Demand for Yachtsman seems to have really taken off, especially during Cowes Week, and is a top seller through the Town, including at Cowes' newest and very civilised drinking establishment, Bertie's, with its leather sofas and chairs and thoughtful, relaxing interior, opposite the British Legion, where Morgans and Ocean World were. (See page seven)

Chris, a long stalwart of SIBA (Society of Independent Brewers) attended the recent awards day to congratulate Goddards for their well-deserved win in the Bottled

THE KINGS HEAD QUAY STREET YARMOUTH

We're in the
**Good Beer
Guide
2013**



**Extensive Table and Bar Menus
with
Weekly Specials Board**



**16th century pub
with low ceilings
and intimate
atmosphere**

Families most welcome

Booking advisable

Tel: 01983 760351

Bitters (over 5%) category with **Ducks Folly** (by now, I am sure that I don't need to explain the anagram).

With the success of Goddards **Collaboration Mild**, Island Brewery boss, Steve Minshull says: " We are thoughtfully testing the market to see if Island Brewery could brew a mild, possibly based on a weaker version of RDA, for a lighter, more refreshing traditional drink. We have had a few requests, but want to make sure there is demand, as, milds do not like to sit around for too long, and we don't want that!" Personally, I think, with Chris and Ash brewing, they can't go wrong, and something has to pay for their new battery pack for the brewery inspection torch!

Cllr. John Nicholson BLO

Yates Brewery

We had a lovely selection of beers after a swap with **Milestone** brewery and other swaps are in the pipeline for breweries which have never had their beers on the island.

We are in the process of arranging beers for forthcoming beer festivals held by local landlords.

Ale House



Out & About

- Weddings
- Parties
- Special Occasions
- Festivals
- Business Functions
- Garden Events

Let us look after the liquid refreshments at your function with our mobile bar. We have our own marquee for outside events and we are completely flexible to your requirements.

NORMAL BAR PRICES

E-mail: newportalehouse@live.co.uk

Phone: 07791 514668

Website: www.newportalehouse.co.uk

Busiest summer we have had, amazing what some sunshine does!!

Regards
Hayley



Salvatore's

Est. 25years

Restaurant open for lunch and dinner

Wednesday to Saturday

Pub open 11am to 3pm and 6pm to 11pm

Sundays 11am to 6pm

PLAYER STREET, RYDE

01983 565324

IOW CAMRA Secretary Alex Lawson has reminded us that the "Strategic Plan" adopted by CAMRA nationally includes the "Fair Deal for your Local" campaign which aims to push the Government to legislate the relationship between tenants and pubcos and to create an ombudsman. In recent years several very good hardworking landlords have had to leave their pubs unable to meet the rental demands of pubcos.



REAL ALES & LIVE MUSIC
GREAT FOOD & GOOD PRICES
IN A TRADITIONAL PUB SETTING

KING LUD
- RYDE ESPLANADE -

SUNDAY ROASTS, DAILY SPECIALS,
OPEN 'TIL LATE, FAMILIES & DOGS WELCOME
01983 562942 WWW.KINGLUD.CO.UK

Tell us your news and gossip.
Tel: 721557
Email: editor@wightwash.org.uk

Diary Dates

- 12th - 15th September* Real Ale and Real Music Extravaganza The Bugle, Yarmouth
- Friday 20th September* Branch Meeting King Harry's Bar, Shanklin 8.30pm
- 21st - 22nd September* Beer Festival The Railway, Ryde
- Sat 5th October* Amen promotions present **The Spikedrivers** at Quay Arts, Newport
- 24th - 28th October* Halloween Beer Festival Castle Inn, Sandown
- Friday 25th October* Branch Meeting Castle Inn, Sandown 8.30pm
- Wednesday 13th November* Walk-About start Vine, Freshwater 8.30pm
- Friday 6th December* Branch Xmas Bash Venue TBA
- Friday 24th January* AGM Traveller's Joy, Northwood.

Garden play area and pet animals

Traveller's Joy

Families Welcome

Pallance Road, Northwood, Isle of Wight

Tel: (01983) 298024

www.tjoy.co.uk

Function room for private parties

Favourite

The Stag, Parkhurst

The Stag has become the latest acquisition of the Island group, Inns of Distinction. It reopened on 25th May after a very comprehensive refurbishment. The decor has been completely redesigned by Martin and Lisa Bullock.

Several small rooms have been combined and a new long bar has been installed into what was once a corridor.



A new ceiling and fireplace have been added to the conservatory, or Garden Room as it is now known. This is not only a very pleasant dining room but also a home to the pub's home grown herbs.



Head Chef, Sean Jeffers explained that the aim is to provide good quality food in a real pub atmosphere using local produce.

There are three handpumps and always at least one local ale. The accommodation upstairs has been converted into four en-suite bedrooms. It's nice to know that this Isle of Wight pub that has in the past years become a little neglected now has a bright future under its new management.



THE GRIFFIN AND HORSE & GROOM
SUPPORTING THE REAL ALE CAMPAIGN



At **The Griffin and Horse & Groom** we always have a choice of three real ales on in each of our establishments, we also support local brewers as a priority.





THE GRIFFIN · GODSHILL · PO38 3JD
 01983 840039 www.thegriffinlow.co.uk
HORSE & GROOM · NINGWOOD · PO30 4NW
 01983 760672 www.horse-and-groom.com

Bertie's, Cowes



There is a new pub in Cowes that is causing a bit of a stir. This part wine-bar, part café, part traditional pub and part jazz-club has certainly broken the mould and is proving popular across the board. There are three handpumps with beer from all of the Island breweries; no food as such but plenty in the way of snacks such as olives and cakes.



There's live music three nights a week with a Jazz Jam Session on Thursdays and music in a similar vein on Fridays and Saturdays.

Unfortunately while I was there, Dan, the smart and helpful barman was unable to advise the Australian gentleman at the bar as to which was "the best night for picking up sheilas".



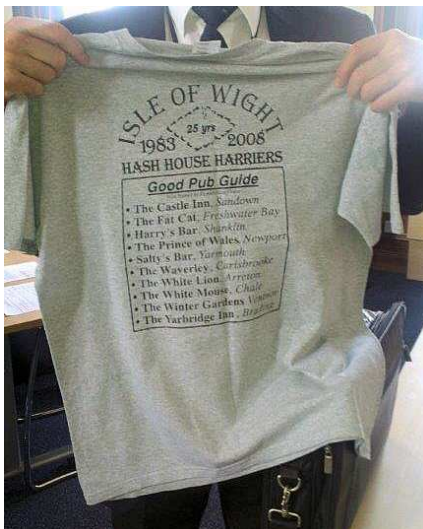
Bertie's is open 11 - 11 weekdays,
11 - 12 Fridays and Saturdays
More details on [facebook](#)



Dianne and David invite you to their
Palace of Smiles
The Crab and Lobster Tap
 Grove Road, Ventnor. Tel 852311
Real Ale Live Music
Good Fresh Local Food
 find us on facebook

John Nicholson (or as I should now call him **Councillor** John Nicholson), our famous chairman, sent a photograph of fellow Councillor Ray Bloomfield holding a t-shirt commemorating 25 years of the Isle of Wight Hash House Harriers. I thought it would be an opportunity to ask Ray to explain what **hashing** is all about.

The whole concept of Hash House Harriers is very different from the norm, it is difficult to explain but it has no rules, no membership and no subscriptions, and is fairly non PC (difficult one for me as a Councillor). You can turn up and not run at all, or you could run a 3 minute mile, it makes no difference to anyone as long as you take part. It's a concept that you either understand and enjoy as a whole package or you could think it is a lot of fools, which is probably true.



You have to be able to laugh at yourself, and along with others, instead of, at others. We are essentially a social club with a half serious running element. The trail can be any distance and we have done 9 or so miles, generally it's about 6 miles and is marked either with flour or sawdust. The 'hare' of the day makes his choice and usually puts in short cuts, check backs, false trails and fishhooks (first 6 run to the back of the group). All in the theme of keeping the fastest runners from going too fast and also letting the walkers keep up. Sometimes we even stop in a pub for a swift one during the run. No prizes for finishing first in this club. I did a 'medium' run last year and it was 12 miles long, well it was April the 1st.

We are commonly known as 'a drinking club with a running problem'. It is the biggest unknown sport in the world with millions of people who take part, HHH generally never

THE WATERFRONT INN SHANKLIN ESPLANADE

FREE HOUSE, DELICIOUS FOOD,
CASK ALES TO COCKTAILS,
LIVE MUSIC &
SEA VIEW TABLES

OPEN ALL DAY, ALL YEAR

FIXED-PRICE, GREAT VALUE MENUS
FANTASTIC VIEWS OVER THE BAY
2 REAL ALES ALWAYS AVAILABLE



QUIZ NIGHT FIRST THURSDAY OF EVERY MONTH
CALL US FOR YOUR PRIVATE FUNCTION OR PARTY
19 ESPLANADE, SHANKLIN PO37 6BN. 01983 863023
W www.waterfront-inn.co.uk. E info@waterfront-inn.co.uk

advertises. It's world wide and was started by ex military in 1938 as a paper chase and the theme has never changed. Expect to get muddy and wet, as we usually cross rivers not bridges, even so you can use the bridge if you don't want to get wet or muddy, no rules.

We meet every Sunday at 11am somewhere and run/walk for about 90 minutes to work up a thirst. The 'Apres' is always, always in a pub with real ale where we meet and are told a few jokes by our RA (Religious advisor). Although he is a strict Catholic this is only by coincidence. We never swear or are unruly and are generally welcome back to the pubs we frequent. You would be welcome to join us, along with wives, boyfriends, girlfriends, children and grandparents. ALL are welcome as we love them all, check Isle of Wight Hash House Harriers for details (www.iwhhh.org.uk)

ON-on (as we say)
Lippy (everyone has a nickname and you can't choose it, we do!)

PS There is actually one rule, which is; there are no rules.

Recommend POI files for sat-navs
GBG Pubs and Brewers
£5.00 from CAMRA shop
www.camra.org.uk/shop
Great for finding pubs when travelling

THE PROPELLER INN

Good Food - Good Ales - Good Company
Telephone 01983 873611
Bembridge, PO35 5PW
Large Car Park
Beautiful Views
Military Memorabilia

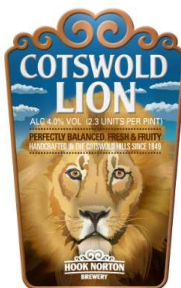
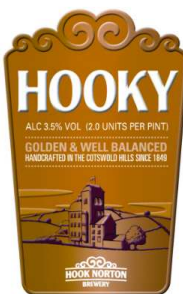
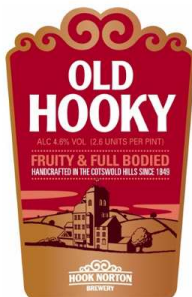
Portable Appliance Testing (PAT)

If portable electrical appliances are used by you, your customers, your guests or your staff then you need to protect yourself and the public. It may even be a requirement of your insurance.

Have your appliances tested by
West Wight Audio.

Call for a no-obligation quote. 0800 118 2484.
All Island coverage.

Hook Norton Ales now available on the Isle of Wight



from Island Ales - Tel: (01983) 821731

Breaking the Seal

I should warn readers that this article includes the word "sphincter". If you are likely to be alarmed or upset by the use of the word "sphincter" then...(oh dear, it's a bit late now isn't it?)

Does this scenario sound familiar? You're out with friends and you've been sitting comfortably for a couple of hours downing a pint or two when you have to "answer the call of nature". After that, nature seems to call with monotonous regularity and you seem to be in and out of the loo every five minutes. You've broken the seal. What's happened?

Well there are several theories mainly involving the kidneys and ADH (antidiuretic hormones) which control the amount of fluid the body converts into urine (sorry should have warned you about that word too). All very complicated (see box).

However, a couple of weeks ago I heard a far more interesting and to me, more plausible explanation.

Going to the loo is controlled by two sphincters (warned you!), an internal involuntary one and an external voluntary one. This internal one is just like the rest of your body when you're having a beer. It's enjoying a nice comfortable relaxed existence and can't be bothered to do much. However as the bladder fills up, eventually the time comes when the pressure has to be released. This is when you feel the need to visit the loo for the first time. What happens next of course is, that this involuntary internal sphincter can't be bothered to close up properly and the poor old voluntary one has a job for the rest of the evening.

Simples!

Alcohol inhibits the release of vasopressin (antidiuretic hormone) from the posterior pituitary gland, resulting in enhanced diuresis. The volume loading that accompanies imbibing complements the diuresis that occurs as a result of reduced vasopressin secretion.



The Castle Inn

12- 14 FITZROY STREET, SANDOWN
01983 403169

THUR 24TH - MON 28TH OCTOBER

Halloween

BEER FESTIVAL

HOG ROAST SATURDAY EVENING



The Beer House, Waterloo

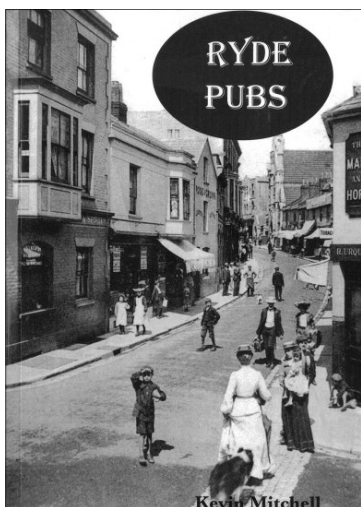
My memory is becoming very bad in recent years, and so is my memory. I believed that previously I had made reference to the Beer House on Waterloo Station. However, Tim assures me that I hadn't written about it before. It would deserve a second mention, anyway. The photo shows the selection of first class ales on draught on 23 July this year, which is but a small representation of the many available. They also have a very fine menu, with a good variety of food. The pub is situated at the south-east end of the main concourse, almost opposite platform one. The only disadvantage (I don't usually include any of these in my recommendations) is that it is below the station concourse level, and therefore a flight of stairs has to be negotiated - not good if one has walking difficulties. Nevertheless, the food and drink are well worth some effort. What a wonderful experience in the middle of London!



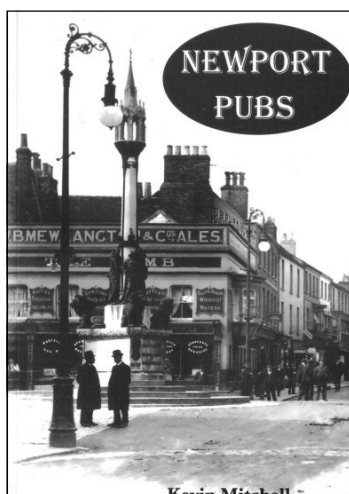
Ron Bird

Island Pub History Books Re-published

Kevin Mitchell, occasional Wightwash contributor, has updated his excellent histories of Ryde and Newport pubs. They are available from all good book shops and are a *must have* for anyone interested in Isle of Wight pubs.



RRP £10



RRP £11

Lorraine and Gary's Beer Pilgrimage to Belgium

(Part 2)

Last September we joined one of Podge's Belgian Beer Tours which began with a trip through Eurotunnel to Calais.

Here's the second part of our tour...

We arrived at our first stop of the day at Gasthof d'Oude Brouwerij, a café located in the former dairy of Affligem Abbey founded in 1062. Since the 12th century, beer was brewed by Benedictine Monks, but in 1970 Affligem Abbey beer was transferred to Brouwerij De Smedt in Opwijk now owned by Heineken. Once the region was one of the richest hop growing regions of Europe and recently a hop field has been replanted.



We sampled the Affligem Cuvee 950 at 6.8% which was brewed in 2012 to mark the 950th anniversary of the founding of the Abbey. Moving

on for lunch and a few Postel Abbey beers; Postel Blond 7%. Mort Subite Palm and Hoegaarden. Very good they were too.



Later in the afternoon we called in at the Brasserie Torenhof on



Tongerlo to sample beers from Belgium's largest independent brewery Haacht. Here we tried the Tongerlo 8 Triple Blond at 9%. Interestingly the Abbey holds a 16th century full size copy of Leonardo Da Vinci's Last Supper which shows many details which are no longer visible in the original fresco due to deterioration. An evening free to explore the many café bars in Mechelen.



The last day arrives and so do we at the Café de Nieuwe Keizer in Mater, the brewery tap

CHINE INN



SHANKLIN

Three well kept and well chosen Real Ales

Opening Times from Easter

12pm - 4pm, 6pm - 11pm (12pm - 10.30pm Sun)

Entertainment

Wednesday, Saturday & Sunday

Telephone

01983 865880 or 07790 663527

West Wight Disco
"The Soundtrack to Your Party"
**MUSIC & LIGHTS
 FOR ALL OCCASIONS**
 10% Discount for CAMRA members
 TEL 759213
 or
 info@westwightaudio.co.uk

for the Roman Brewery who brew the Ename Abbey range. And of course we had to sample both the Ename Dubbel and Tripel beers which are one of my favourites. A chance to do a bit of shopping (I mean beer shopping) at the Dranken Geers beer warehouse at Oostakker where there is a selection of over 600 beers to choose from.

It was whilst we were shopping that we were able to sample beers



brewed by Brasserie Du Bocq brewed for Ramee Abbey. The beers were Blond & Brune flowing freely and added a new dimension to shopping. Our last stop of the tour was at the Van Steenberg Brewery flagship Beer & Food house for a much needed superb Buffet and yet more beer.



The last beer of the tour was Bornem Abbey Tripel. It was then back to Eurotunnel and home.

What a super tour it was and we would recommend it 100%.

Gary & Lorraine.

Podge's Beer Tours

are organised by Chris "Podge" Pollard and offer a varied programme of tours in Belgium and further afield for everyone from novice to expert.

The next tour, **Totally Trappist** a six day tour of Belgium and the Netherlands including a Trappist Beer Festival starts on October 1st. For more details visit www.podgebeer.co.uk



The Waverley Carisbrooke

Steve and the rest of the staff are waiting to welcome you



Food Served 12 - 2.15 6.30 - 9.15
 Sunday 12 - 2.30 not evenings

Tel: (01983) 522338

Somerset, Avon & Wiltshire

We set off for Weston Super Mare and stopped at Street for the afternoon to do some shoe shopping. Difficult to park the camper van there but between us got three pairs of Clark's shoes for £45. Bargain!! Had lunch in the very good Wetherspoons there and continued on our way.

On arrival at Weston Super Mare I set up water, electric, tv, etc and relaxed. We walked into Weston which is quite a hike; we normally caught the bus in. One day we went on the bus to Wells, drivers on that route deserve a medal, and had an excellent lunch in The Globe. It had four beers, all local ones and the Potholer went down a treat.

Due to a lot of time spent walking, a dearth of good country pubs open when needed, we resorted to water. Good for flushing the system I believe! Was not enamoured of the pubs in Weston but Wetherspoons had a decent pint as usual.



The Bird in Hand

On to Bitton, halfway between Bath and Bristol and a nice little site with bus stop outside. We caught the bus into Bath and walked back along the River Avon and came across a gem of a pub, The Bird in Hand, High Street, Salford

(www.birdinhandsalford.co.uk) . This pub should be in the G.B.G but isn't. Four beers, Buttcombe bitter, Otter bitter, Doombar and Bees Knees and they were all in excellent condition and temperature and Sunday lunch was

very, very good. They had a beer and cider festival 13th to 14th July.

From Bitton we caught the bus to Bristol, a city of churches and pubs and visited the S.S. Great Britain which was very interesting. I was amazed it ever got back to the U.K. and into the dock where it was built! The hull is full of holes now in spite of restoration, etc. The cabins and bunks were very small, as a race we must have grown a lot since then.

The Lloyds No. 1 Bar was okay with good beer.

Back to Bath for a day and found the Sausage Shop and got four Mongolian Spicy Sizzlers. Wow! They were hot and gingery and was glad we had some Rev.

James in bottles in the camper to wash them down with. Good Wetherspoons in Bath too with



Three Magpies

seven ales – the Black Bear @ 5% was good.

We carried on to another site near Devizes or Wadworthshire as it could be known! The Three Magpies outside the campsite had five ales, Swordfish 5%, Bishops Tipple 5%, 6X at 4.3%, Horizon at 4% and Howtry I.P.A. at 3.6%, plus Old Rosie Cider. It has free WiFi, clean loos and good food, a large beer garden and only a stone's throw from the Kennet and Avon canal.

Walked into Devizes along the canal bank and found the Lamb Inn (we read about this in the Telegraph Weekend Pub Point). It is a proper pub, no food but you're welcome to bring your own. In the snug there is a 200 yd rifle range, accessed through a hatch about the same size as a dart board and probably about 200 years old. They hold twice weekly shooting matches with other pub teams. A few other pubs in the area have ranges too. Their 6X was very good and they clean the pipes on changing every



The Lamb



The Bridge

barrel. Toilets very clean too. Really atmospheric pub and well worth a visit. I went to the Wadworth Brewery and although we didn't go round it you could sample beers in their bar. The staff were very helpful and gave me a Swordfish poster and pump clip. I also bought 12 bottles of St. George and the Dragon for £15. Bargain! They brew 11 beers

altogether and have 16 pubs in Devizes. I thought the Swordfish was excellent. One day we caught the bus to Melksham and walked back along the canal bank and stopped at the Bridge which is a Wadworth House, as they all seem to be around there. Very clean toilets and the beer went down well on a very hot day.

Another day we caught the bus to Melksham, walked around and tried the American Pale Ale in what can only be described as an amazing Wetherspoons. The Bear has seven real ales and has only been open for about 18 months. One of the best we've been in and the ladies toilets were magnificent and had won an award. The gents were clean also.

Ah, well, another holiday gone. Here's to the next one.



The Bear

Pete Cobb

In the next issue of Wightwash we hope to be introducing you to our new Police Correspondent Sgt. Stuart Snow. In the meantime I thought it would be interesting to look at an article Sgt Graeme Mudge wrote in 2007 on the subject of DPPOs especially in the light of a recent County Press report (see box).



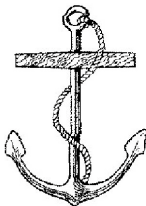
You may recently have heard about DPPO's. What are they you may ask?

Well, it stands for **Designated Public Places Order**.

Drinking on the streets can be a problem in the community and certain areas have suffered more than most. The Government decided to tackle this problem in the Criminal Justice and Public Order Act 2001, Section 13. This provision enables the Council to "designate" an area where it becomes an offence to drink alcohol after being requested not to do so by a Police Officer. The area designated will be a public place and will not take into account pub gardens or even tables outside pubs if there has been proper authority for the placement of them.

The idea of the legislation is to give Police Officers a power to stop nuisance drinkers and not necessarily those who may be enjoying a glass of wine or real ale with a picnic, but it will be up to the Officer to decide as this may be a grey area.

Before an area is designated, the authority has to be satisfied it is necessary and it will do this by hearing evidence from the Police and residents. Public consultation also needs to have taken place with adverts for meetings placed in the County Press.



THE ANCHOR INN

1 HIGH STREET, COWES
(opposite Cowes Yacht Haven)

THE OLDEST AND MOST TRADITIONAL PUB IN COWES

- Large selection of Real Ales
- Home Cooked Food • Live Bands Wed, Fri & Sat
- Food served all day 12 noon - 10pm (9.30pm Sun)
- Accommodation - 7 En-suite rooms

The Stable Bar may be hired for parties, weddings, private functions etc.

Tel: 01983 292823 Fax: 01983 281511
www.theanchorcowes.com

When the Order is made, the area concerned will be signposted so that members of the public are aware. A Penalty Notice can be issued if a person fails to comply with a Constable's request to stop drinking and the alcohol can be seized and the person may be arrested if necessary.

At present there are two areas on the Isle of Wight; Newport town centre and East Cowes which are designated and are in force, but there are plans for others.

The Order is not a drinking banning Order which is something else introduced recently in the Violent Crime Act.

This is an Order which is made by a Court against an individual to stop persons entering pubs and/or Clubs.

This Act is another piece of legislation and has all sorts or provisions – more of which in a later episode.

As a rule of thumb, if you are going out on to the street for a smoke, it's probably best to leave your beer inside.

Many thanks.
PS Graeme Mudge Licensing Sergeant

**Report from Isle of Wight County Press
Thursday 15th August 2013**

POLICE are set to launch a crackdown on problem drinkers in the Bay area and Brading.

The force is hoping to introduce a designated public place order or DPPO in areas plagued by problem drinkers in Sandown, Shanklin, Lake and Brading to tackle anti-social behaviour caused by alcohol.

The plans were outlined to members of Brading Town Council at its last meeting by PC Mark Vincent. He told members the new order would give police the powers to control problem drinking in the town in areas such as the High Street and Tudor Gardens.

The DUKE of YORK INN
 Mill Hill Road, Cowes, Isle of Wight PO31 7BT
 Tel. 01983 295171
www.dukeofyorkcowes.co.uk

Special Offer for CAMRA Members

20p off per Pint on REAL ALES

on production of Membership Card

Great Value Accommodation
 All Rooms en-suite

Serving Full English Breakfast through to Evening Meals
 Large Crews & Families Welcome



The Simeon Memorial

This memorial which stands at the junction of Castle Road and Carisbrooke Road on the outskirts of Newport was erected as a memorial to Sir John Simeon who lived at Swainston from 1815 to 1870. He owned land in the Ryde area and the cemetery was sited on his land. Living as he did in West Wight he counted Lord Tennyson among his friends. Julia Margaret Cameron took this striking photograph of him which is at present in the Royal Collection.

After a short Naval career he was elected 1847 as a Liberal MP for one of the two parliamentary seats available on the island in those days,



however his parliamentary career came to a temporary halt when he converted to Catholicism and because he felt that this could estrange him from his electorate he resigned his seat.

However he misjudged his own popularity, for in 1865 he was persuaded to stand again

and was decisively re-elected. This should be viewed alongside widespread antagonism towards the catholic church in those days and he was in fact the only practising catholic in the House of Commons for some years.



The Volunteer

Victoria Street, Ventnor Tel: 852537

Kim and Sue

Welcome all customers, old and new!

5 Real Ales plus Old Rosie Cider



Rob Marshall

Win a £20 Meal Voucher for the Chequers Inn or a case of Yates' Ales

Just answer these easy questions. The first two correct answers out of the hat on 1st November win the prizes.

Send answers to - The Editor, Wightwash, Oakdene, Rookley, Ventnor, PO38 3NH or email - editor@wightwash.org.uk

- 1/ Who wrote Chitty Chitty Bang Bang?
2/ What is the Capital of Peru?
3/ To which family of the orchestra does the piano belong?
4/ Who was the captain of the Australian test cricket team this summer?
5/ Which company makes "Telecaster" and "Statocaster" guitars?
6/ Cirrus, Cumulus and Stratus are all types of what?
7/ Who was the British Prime Minister at the time of the coronation of Elizabeth II?
8/ What fruit is used in the making of Calvados?
9/ and 10/ Identify these pubs



9



10

Answers to the Spring Quiz

- 1/ Katrina 2/ Lincolnshire
3/ Marsupials
4/ Prince Edward, Duke of Kent (William IV's brother)
5/ Apache 6/ New Zealand
7/ James Callahan
8/ A Christmas Carol
9/ Pan Books
10/ Cathedral City Cheese

Roger Corbett of Blackheath wins a £20 meal voucher and Jenny Mew of Chale wins a case of Yates' beers. Thank you to all the others that took part.

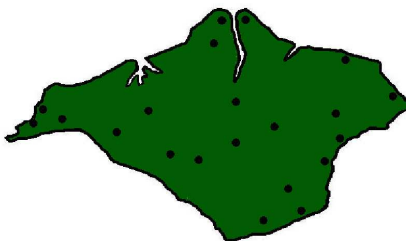
Advertisement for The Chequers Inn. It features a large photo of the pub building, two award medals (1999 UK Family Pub of the Year and 2003 CAMRA Good Beer Guide Public House), and smaller photos of the interior and garden. Text includes: 'A true locals pub where visitors are always made welcome', 'THE CHEQUERS INN', 'NITON ROAD · ROOKLEY · 840314', 'An award winning pub set in the heart of the island's countryside...', and 'Food served all day everyday • Large garden and car park • Extensive children's adventure playground'. The website www.chequersinn-iow.co.uk is listed at the bottom.

BeerPoint

BeerPoint is a system whereby members of the Isle of Wight branch of the Campaign for Real Ale can recommend pubs that they have recently visited and found the beer to be of a good standard.

The system is providing a useful tool in highlighting good (or bad) practice.

BeerPoint is administered by our chairman John Nicholson who can be contacted on jnl@johnnicholson.co.uk



Here is a list of our current **Recommended BeerPoint** pubs by area:

North:

Traveller's Joy, Northwood; Anchor, Cowes; Union, Cowes; Fountain, Cowes; Portland, Gurnard; Lifeboat, East Cowes; White Hart, East Cowes; Duke of York, Cowes; Kingston, Cowes; Cowes Ale House; Sportsman's Rest, Porchfield.

East & North East:

Vine, St Helens; The Old Village Inn, Bembridge; Propeller, Bembridge; Simeon Arms, Ryde; Swan's Nest, Ryde; Castle, Ryde; Fowler & Co, Ryde; Lake Huron, Ryde; Dark Horse, Brading; King Lud, Ryde; Yarbridge Inn, Brading; Railway, Ryde.

Central:

Dairyman's Daughter, Arreton; White Lion, Arreton; Crown, Shorwell; Three Bishops, Brighstone; Chequers, Rookley; Griffin, Godshill; Taverners, Godshill; Four Seasons, Wroxall; Pointer Inn, Newchurch; Prince of Wales, Newport; Newport Ale House; William Coppin, Newport; Castle, Newport; Wren's Nest, Newport; Stag, Newport.

South and South East:

Buddle, Niton; Village Inn, Shanklin; Chine Inn, Shanklin; King Harry's, Shanklin; Waterfront, Shanklin; Crab and Lobster Tap, Ventnor; Volunteer, Ventnor; White Lion, Niton; Castle Inn, Sandown; Tap, Sandown; Perks, Ventnor; White Horse, Whitwell.

West:

Prince of Wales, Freshwater; King's Head, Yarmouth; Sun, Calbourne; Sun, Hulverstone; Broadway, Totland; Horse and Groom, Ningwood; Vine, Freshwater.

Please check the website for an up-to-date list

www.wightwash.org.uk
and click on "BEER POINT"



KING HARRY'S BAR
Old village shanklin
Wide variety of real ales
Open 12 noon - 11pm
Tel: 863119
Live Bands every Friday
from 9pm 'til 11
Snacks served Daily
Function room available for all occasions

The views expressed in Wightwash are not necessarily those of the editor or CAMRA (the Campaign for Real Ale) either nationally or locally.

Wightwash can be contacted by phone 721557 or email editor@wightwash.org.uk